

With a great dream towards a brighter future
And for your success the journey continues

Domestic

Oriental Precision & Engineering Co.,Ltd.

Busan Factory

1614-1, Songjeong-dong, Gangseo-gu, Busan, Korea
Tel. +82-51-202-0101 Fax. +82-51-831-3306

Jinhae Factory

575-1, Myeong-dong, Jinhae-si, Gyeongsangnam-do, Korea
Tel. +82-55-545-8300 Fax. +82-55-545-8309

Oriental Heavy Industries Co.,Ltd.

Jingyo Factory

802, Baengnyeong-ri, Jingyo-myeon, hadong-gun, Gyeongsangnam-do, Korea
Tel. +82-55-880-5800 Fax. +82-55-880-5888

Kwangyang Factory

1676-3, Taein-dong, Kwangyang-si, Jeollanam-do, Korea
Tel. +82-61-798-6666 Fax. +82-61-795-6661

Oriental Precision Machinery Co.,Ltd.

1591-7, Songjeong-dong, Gangseo-gu, Busan, Korea
Tel. +82-51-831-8899 Fax. +82-51-831-8908

Oriental Inspection & Service Co.,Ltd.

25-1187, Shinho-dong, Gangseo-gu, Busan, Korea
Tel. +82-51-831-2747 Fax. +82-51-831-6260

Overseas

Dalian Oriental Marine & Heavy Industry Co.,Ltd.

No.92 East Street Gushan Development Zone Dalian City Liaoning Province China

Tel. +86-411-3920-8888 Fax. +86-411-3922-3999

Oriental Precision (Dalian) & Technical Service Co.,Ltd.

No.92 East Street Gushan Development Zone Dalian City Liaoning Province China

Tel. +86-411-3922-3805 Fax. +86-411-3922-4000

Yantai Oriental Precision & Engineering Co.,Ltd.

No.2 Qingdao Street, B-17 District, Yantai Economic Development Zone, Shandong Province, China

Tel. +86-535-6953-701 Fax. +86-535-6953-699

Oriental Vietnam Precision & Engineering Co.,Ltd.

01 My Giang, Ninh Phuoc commune, Ninh Hoa District, Khanh Hoa province, Vietnam

Tel. +84-58-3622 722 Fax. +84-58-3622 721

Oriental Precision & Engineering(Singapore) Co.,Ltd.

No.3 International Business Park #04-02 Nordic European Centre Singapore

Tel. +65-6569-5005 Fax. +65-6560-3797

OPCO JAPAN Co.,Ltd.

1-8-6-201 Ebisu Shibuya-ku Tokyo Japan

Tel. +81-03-5798-3324 Fax. +81-03-3446-0946

ORIENTAL

Customer-First

The Best MASTER in Shipbuilding & Marine





With the Passion geared towards the world, With the Technology oriented towards the future. **ORIENTAL, the Best Master in Shipbuilding & Marine**

Oriental Precision & Engineering Co., Ltd. sails with three integrated and automated factories are located in Busan and Jinhae, making heavy structure such as funnel, Life boat, devil, Engine room casing, pursuing to be the best Shipbuilding and marine Industry company in the world.

Busan factory is located in the center of Noksan National industrial complexes that is based on an area of 23,000 m² with 9,986 m² formed as the factory site. It moved into Noksan National industrial complexes recently in 2001 with proceeding the active technical cooperation with overseas companies such as Sekigahara Heavy Industry, Mitsubishi Deck Machinery, being able to produce the world-competitive products to step forward to be the best Ship machinery plant now.

Jinhae 1 factory was founded in 1992 and has the best geographical conditions with the dock of 600m size which is precisely appropriate for transporting heavy structure, and even better with fine climate. It is well equipped to be able to turnover blocks and load 7 stairs-size of Deck house, and is built as the Deck house factory in 1996 and has 15 and 100 ton cranes connected to the roof of a unitary building of 130m in length, 43m in width and 48m in height.

And it has production line-up which overcomes the possible disadvantages of superstructure by introducing bogie-transport system to make smooth procedure and does every steel cutting with plasma cutting machine.

Jinhae 2 factory which is run regularly from 2000 newly established the heavy structure painting factory and eventually finished construction of the Dock to be able to make a shipment and better productivity.

With all these facilities and abundant experience from longer than 20 years devoted for only one business, every employee run all the times for the best quality and customer satisfaction with the motto [The best master in Shipbuilding & Marine]

Oriental always prioritized customer satisfaction above all with the advanced technology, quality and impeccable services.

Our great efforts to keep trust of our customers all the times enabled us to extend our range of products from the small scale such as the fittings to the large scale such as Deck house produced on orders first in Korea. And we're taking the second step forward the world enthusiastically as we have entered Marine Plant Industry considered as the biggest power for future growth.

We have always been challenging difficult tasks to be the best and solved it with strong faith and great interest from all the customers and shareholders.

Now, OPCO is going to become even more competitive with the world by opening up rapidly developing overseas markets such as China, Singapore, Vietnam, etc. Therefore, OPCO established our now vision named "VISION 2015" zealously aimed as the medium & long-term goal to step towards future. Every workers and members of the board cooperate harmoniously to offer the best service to customers as the first priority, and also keep providing the highest quality products to customers with firm determination to be the best Shipbuilding and marine Industry company.

OPCO will never stop to generate even greater satisfaction of our customers by providing the best quality, the most reasonable price and the most efficient delivery system.

I firmly promise to show our limitless and invaluable potential to you, our great customers and shareholders who constantly give us interest and deserve the best service with your valuable time.

Thank you.

Oriental Precision & Engineering Co., Ltd.
CEO Chong-suk, Suh

Chongsuk Suh



HISTORY

1980's

- 1980. 07
ORIENTAL Fitting CO.,LTD. founded
(Known today as ORIENTAL PRECISION
& ENGINEERING CO.,LTD. with a
starting capital of 10millions(KRW)
- 1982. 09
Moved the main office to busan factory
(370-18 Sinpyung-dong, Saha-gu, Busan, Korea)
- 1987. 09
Chosen as one of the progressive small
and medium enterprises by the Bank of Korea
- 1987. 11
Won the Best Export company Award
for achieving \$ 1 million (USD) Sales



1990's

- 1990. 05
Renamed ORIENTAL PRECISION &
ENGINEERING CO.,LTD.
- 1991. 11
Won the Best Export company Award for achieving
\$ 5 million(USD) Sales and
The encouraging Industry Award
- 1992. 06
Built Jinhae Factory (575-1, Myeong-dong, Jinhae,
Gyeongsangnam-do, Korea)
- 1994. 11
Won the Best Export company Award for achieving
\$ 10 million(USD) Sales
- 1998. 12
ISO 9001 Certification (LR)-Busan Factory
- 1999. 06
ISO 9002 Certification (LR)-Jinhae Factory



2000's

- 2000. 04
Built Jinhae 2 Factory
- 2001. 06
Moved and built the new Busan Factory
(1614-1, Songjeong-dong, Gangseo-gu,
Busan, Korea)
- 2001. 11
Chosen as the Leading Company of making
component materials by Ministry of
Commerce, Industry and Energy
- 2001. 12
Registered in KOSDAQ stock market
- 2002. 01
ISO 9001:2000 Certification (LR)
- 2002. 08
Established the overseas subsidiary in Japan-
(OPCO Japan Co., Ltd.)
- 2003. 08
Established the overseas subsidiary in China-
(Dalian Oriental Precision & Engineering Co.,Ltd.)
- 2003. 11
Won the Best Export company Award for
achieving \$50 million(USD) Sales and the
"Stone pagoda" medal of the Industry
- 2005. 12
Established the R&D Center in Busan Factory
- 2006. 11
Won the Best Export company Award for
achieving 100 million(USD) Sales
and the Pusan Export award
- 2006. 12
Established the overseas subsidiary in China-
(Yantai Oriental Precision & Engineering Co., Ltd.)
- 2007. 12
Established the affiliated cooperation with the
Pacific Heavy Industry Co.,Ltd. and signed a MOU
- 2008. 05
Merged the subsidiary company,
Daekyung Precision & Engineering Co.,LTD.
- 2008. 07
Established the subsidiary company
in Singapore-(Oriental Precision &
Engineering(Singapore)Pte.Ltd.)
- 2009. 01
Established the overseas subsidiary in
Vietnam-(Oriental Vietnam Precision &
Engineering Co., Ltd.)
- 2009. 05
Developed Deck Crane newly and delivered it
- 2009. 06
Held a Ceremony for delivery of 1,000th Deck House.
- 2009. 11
Obtain OHSAS 18001(DNV), KOSHA 18001(KOSHA)
Certification



VISION 2015

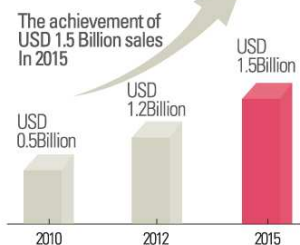
The best Master in Shipbuilding & Marine

THE BEST MASTER IN SHIPBUILDING & MARINE

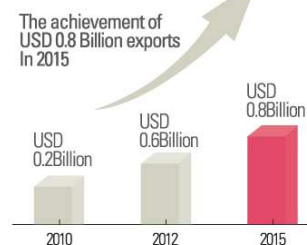
Sincerity·Harmony·Faith



Sales Outlook

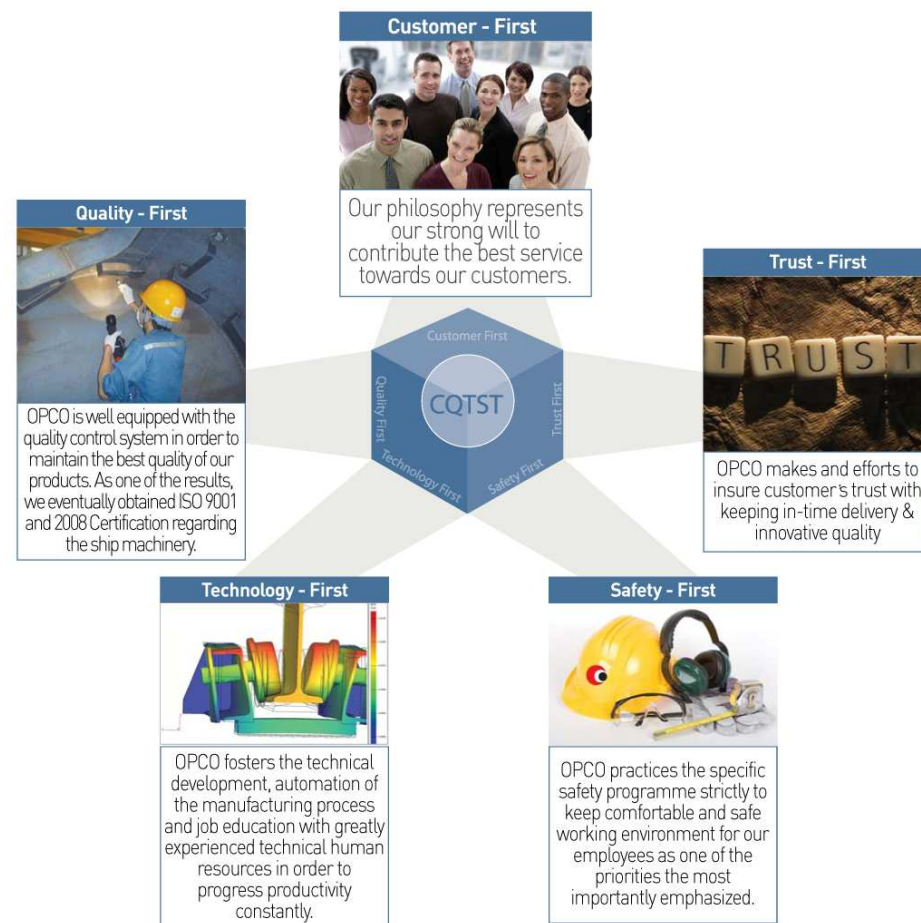


Exports Outlook



CQTST

Customer-First Quality-First Technology-First Safety-First Trust-First



HSE



Health

OPCO offers a regular health checkup for employee health care every year. To prevent musculo-skeletal disorders, we have workers do stretching before work starts and run fitness center all the time.

We provide the employees with health consultation and first-aid by having a nurse stationed in health care room.



Safety

OPCO drives for accident-free workplace by running safety programs along with the policy to care employee health and safety first. We do safety control thoroughly through daily safety education and premonition training of danger not only for site safety staff but also for site managers and supervisors and by having safety staff for each department.

Environment

OPCO is doing company-wide activities e.g., energy saving, recycling maximization, development of energy-saving product, minimization of air and water pollution, environment-friendly green space placement, pleasant working environment, environment facilities and investment therein in consideration of neighbor residents and environment consciousness strengthening of employees.

CERTIFICATION



QM Quality Management

Quality policy of OPCO is to realize customer satisfaction by supplying products that meet customer requirements and lawful regulations and by continuously improving and effectively applying quality management system including processor in order to guarantee compliance to customer requests.



ISO 9001:2008

OPCO prepares and runs the quality management system for all processes, i.e. design, P/O, purchase, production, inspection, test, delivery and service, in compliance with ISO 9001: 2008 requirement. Also, all quality records are being maintained easy to read, easy to discern and retrieve.



H&S Management

OHSAS 18000, KOSHA 18001 are international occupational health and safety management system specification. Oriental gains assurance by managing to decrease the risk to employees, improve an existing H&S management system, demonstrate diligence.



Main Business Overview

SUPERSTRUCTURE

DECK HOUSE
ENGINE ROOM CASING
FUNNEL
BLOCK

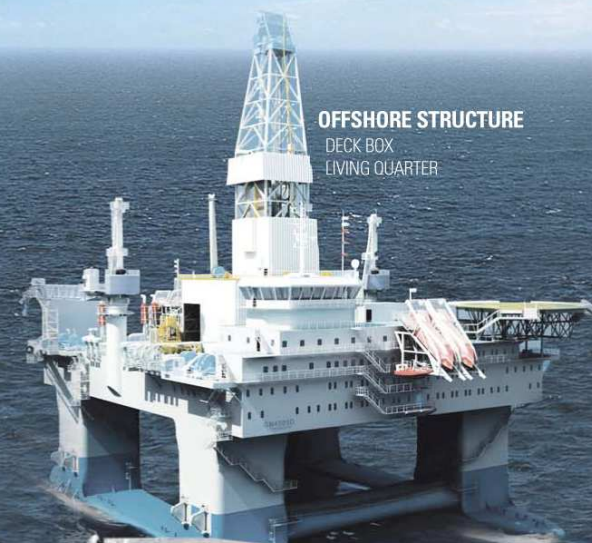


SHIP MACHINERY

DECK CRANE
KNUCKLE CRANE
JIB CRANE(HHC,PVC)
MONORAIL HOIST
WINDLASS & MOORING WINCH
LIFE BOAT DAVIT & WINCH

OFFSHORE STRUCTURE

DECK BOX
LIVING QUARTER



ACCOMMODATION BARGE



SUPPLY VESSEL



HEAVY CARGO CARRIER



COAL CARRIER



MULTI PURPOSE CARRIER



SKID BARGE



HOPPER BARGE



DECK HOUSE



DECK CRANE

Jinhae Factory



Jinhae Factory I

Layout

- | | | |
|---------------------------|--------------------------------------|-----------------------------|
| 1. Main Building | 5. Assembly Shop | 9. Deck House Election Area |
| 2. Welfare Building | 6. Pre-outfitting Area | |
| 3. Steel plate stock area | 7. Grand Assembly Shop | |
| 4. Steel Cutting Shop | 8. E/R Casing & Funnel Election Area | |

Main Item	Land	Building Area	Capacity(Hull, WT)
Superstructure	54,067 m ²	22,235 m ²	23,000 ton
Offshore Structure			

Jinhae Factory II

Layout

- | | |
|---------------------|--------------------------------------|
| 1. Main Building | 4. Pre-Outfitting Area |
| 2. Welfare Building | 5. Deck House Election Area |
| 3. Assembly Area | 6. E/R Casing & Funnel Election Area |

Main Item	Land	Building Area	Capacity(Hull, WT)
Superstructure	64,764 m ²	2,684 m ²	26,000 ton

Offshore Structure



Accommodation Barge

The Accommodation Barge is the Offshore structure which is anchored by a marine structure such as rig ship and provide comfortable and pleasant accommodation to workers who do marine and drilling work for long time. It accommodates generally 300 to 400 in number of persons, and is used to support Offshore structure.

LxBxD	100m x 30.5m
Gross Tonnage	10,528 Ton
Deadweight	10,677 Ton
Clear Deck Space	1,338 m ²
Complement	350Men

Offshore Structure



Heavy Cargo Carrier

Heavy cargo carrier is a barge that transports freight loaded on its top. It has the unique characteristic of being designed to be used as a sailing ship with easy stern docking, and to appropriately maintain its balance. It has the characteristic of allowing easy freight loading and unloading, and has an excellent workability with minimized ballast weight for the ship's balance.

LxBxD	151.2m x 38m x 8m
Gross Tonnage	12,144 Ton
Deadweight	15,000 DWT
Clear Deck Space	125m x 36m
Complement	24 Men



Hopper Barge

Hopper barge is a kind of non-mechanical vessel that cannot move around by itself. Designed to carry materials, like rocks, sand, soil and rubbish, for dumping into the ocean, a river or lake for land reclamation. Hopper barges are seen in two distinctive types; raked hopper or box hopper barges. The raked hopper barges move faster than the box hoppers; they are both designed for movement of dry bulky commodities.

LxBxD	134m x 26m x 9.15m
Gross Tonnage	3,917 Ton
Deadweight	4,200 DWT



Skid Barge

Skid Barge generally represents special equipment used on the sea rather than Dock which is space for shipbuilding. By using Skid Barge, the budget and time for building Dock could be saved and the land space could be used effectively to enormously increase productivity.

LxBxD	102m x 30m x 6m
Deadweight	60,000 DWT



Deck Box

Semi-submersible Drilling Rig is Deep-sea drilling structure equipped with living space called Deck Box, so provides comfortable accommodation to workers and increases efficiency of work.

LxBxD	81m x 30.5m x 5.5m
Deadweight	10,200 DWT



Living Quarter

For the living quarters installed on the ocean structure, we produce it as a turnkey base to provide convenient and pleasant living facilities to the sailors who work long time on the sea, so that they can improve their productivities at best.

LxBxD	33.5m x 15.2m x 8m
Complement	24 Men



Power Barge

A power barge is a power plant installed on a deck barge. They perform in a variety of applications such as base load, emergency and temporary power, transportable power or in power generation projects where local construction costs and risks run high.

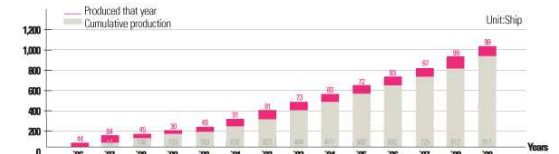
Superstructure



Deck House

Deck House is our main product that is large and heavy structure of 9 stories and 1,500 tons at max. It is delivered to shipbuilding yard after completion of interior works. The inside of Deck House has the residential facilities for crews' daily life, offices, cargo control room and navigation room.

The first production was put in 1994; the annual production capacity is 100 units a year that is the world's top in terms of production of a single plant. Since 2004, we have been improving technical competitiveness by designing overall system for ourselves.

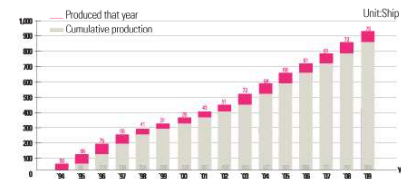


Superstructure



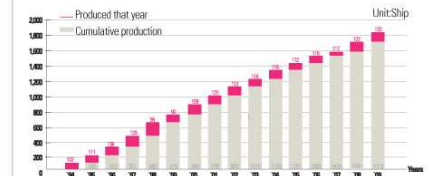
Engine Room Casing

Engine Room Casing is Engine room cover placed in the upper of ship engine room adding emergency generator, auxiliary boiler and ventilation fan. The structure has a passage function connecting to the funnel. We are now producing 70 units a year since the first production in 1993.



Funnel

Funnel is placed in the upper of Engine room Casing. It finally discharges various waste gases from the ship. Inside it has gas pipes and outside it carries a logo, shipping company symbol. We are now producing 130 units a year since the first production in 1989.



Mega Block

In our largest factory, it is produced as one form of stern block and engine room unit block. Work period is reduced by all-weather working inside the factory, and using 100-ton overhead crane, the product is released after finishing post-work inside the largest factory.

Busan Factory



Layout

1. Head Office
2. Cutting Shop
3. Fabrication Shop
4. Crane Assembly Shop
5. Crane Test Area
6. Painting Shop
7. Stock Area

Capacity

Main Item

Machinery

Land

22,968 m²

Building Area

11,428 m²

Manufacturing Products

Deck Crane
 Knuckle Crane
 Provision Crane
 Hose Handling Crane
 Monorail Crane
 Engine Room Crane
 Life Boat Davit
 Free Fall Davit
 Life Raft & Rescue Davit

Ship Machinery



Deck Crane

Deck crane is the compulsory equipment for loading and unloading, and it is installed on the bulk carrier or container ship. And deck crane is complex machinery applied hydraulics, electric system and functions like the body of crane, winch, hydraulics components, slewing bearing.

PARTICULARS

Lift Capacity	20 ~ 45Ton
Working Radius	20 ~ 45M
Hoisting Speed	0 ~ 20 m/min [Full Load] , 0 ~ 40 m/min[0~SWL x 30%]



Hose Handling Crane

This electro-hydraulic driven hose handling crane is manufactured and tested in compliance with the requirement of "OCIMF" and "Lifting Appliance".

The OPCO's hose handling crane designed by compact and durable construction has the best advantage of handling oil hose for the ships of tanker, VLCC, ULCC, LNG and LPG carriers. The lifting capacity is available up to 20 tons and max.30m jib length, and slewing angle is available "Endless"

PARTICULARS

Lift Capacity	5 ~ 25Ton
Working Radius	15.5 ~ 30M
Hoisting Speed	10 m/min[Full Load] , 20m/min [No Load]



Provision Crane

This crane is electro-hydraulic driven self contained power pack, cylinder luffing type, and used generally for the handling provisions and engine spares for most ships, and manufactured & tested in compliance with requirements of lifting appliances. The OPCO's hydraulic provision crane is available with lifting capacity up to 12.5 tons and out reach up to 22 meter.

PARTICULARS

Lift Capacity	2 ~ 12.5Ton
Working Radius	6 ~ 22M
Hoisting Speed	0 ~ 10 m/min



Knuckle Crane

Knuckle crane is special crane which is composed of 2 Jibs and the Hinge Part, so it can operate in the narrow space. It is installed on the special ship complexed upper deck, such as drellship, FPSO.

PARTICULARS

Lift Capacity	3 ~ 150Ton
Working Radius	2 ~ 48M
Hoisting Speed	0 ~ 60 m/min

Ship Machinery



Electric Slewing Crane

Electric slewing crane is installed on the dredger ship and works collecting and transporting the sand of the under water.

PARTICULARS

Lift Capacity	5 ~ 15Ton
Working Radius	10 ~ 25M
Hoisting Speed	0 ~ 10 m/min



Monorail Crane

This sliding beam monorail crane is manufactured and tested in compliance with the rules of lifting appliances, and is used for handling of provisions and engine spares for container ship, tankers and VLCC.

The OPCO's monorail crane is available with lifting capacity 13 tons and outreach max.7.5 meters from ship's parallel body.

PARTICULARS

Lift Capacity	3 ~ 13Ton
Working Radius	outreach 5~6 m From Ship side shell
Hoisting Speed	10 m/min



Deck Machinery

The high-pressure hydraulic winches & windlass are designed / manufactured in compliance with rules and regulations of classification society, ISO and OCIMF. The capacity of mooring winch is available up to 35ton.

PARTICULARS

Windlass Rated load	14.7 ~ 72.1Ton
Windlass Rated speed	9 m/min
Mooring Winch Rated load	10 ~ 30Ton
Mooring Winch Rated speed	15 m/min



Engine Room Crane

The OPCO's engine room crane is manufactured and tested in compliance with the rules of lifting appliances, and used for the maintenance of main engine for all kind of ships.

The OPCO's engine room crane is available with lifting capacity up to 13 tons and crane span max.10 meters.

PARTICULARS

Lift Capacity	2 ~ 13Ton
Crane Span	5~12M
Hoisting Speed	Dual speed [High / Creep]

Ship Machinery



Life Boat Davit

A gravitational-depression type Davit which is designed into the precise and strong structure of OPCO has the best condition to control the equipped life boats on Tanker, BC, Ro-Ro ship, passenger ship and CONT.

PARTICULARS

Capacity	HGD-057-24, HGD-062-26, HGD-073-30, HGD-082-30, HGD-100-32
Davit Load	4,000 ~ 10,000 kg
Hoisting Speed	Life: 0~3m/min, Life/Rescue: 0~18m/min



Free-fall Davit

A Free fall davit of OPCO which is equipped the stern of a ship is designed to launch the life boats on a Tank ship and BC by its own gravity.

PARTICULARS

Capacity	FD6240
Davit Load	6,200 kg
Launching	By free fall or by davit arm
Recovery	By ship power, Approx. 4m/min



Positioning & Anchor Mooring Winch

The high-pressure hydraulic positioning mooring winches are designed manufactured to allow cast anchor deployment and secured mooring. The capacity is available up to max 100 tons with strong sturdy structural design. The winch control are available by local control as well as wheelhouse central control with rope tension and length readouts, and programmable mooring parameter. It is also available emergency release with coordinated multiple winch release function. The required guide sheaves and fairleaders are also available as parts of mooring winches.

PARTICULARS

Type	High pressure hyd.-driven, Single drum
Lifting load	30~200 Ton
Rated speed	0 ~ 30m/min
Control	Bridge Control or Local Control



Offshore Crane

Pedestal mounted oriental offshore crane is designed manufactured in compliance with the latest international standards for offshore cranes with certification requirements by all of leading classification societies. Optimal design is available to various sea states, different offshore requirements and comply with API-2C.

PARTICULARS

Lift Capacity	20 ~ 400Ton
Working Radius	20 ~ 70M
Hoisting Speed	0 ~ 40 m/min (Full Load), 0 ~ 55 m/min

AFFILIATES(DOMESTIC)



OHI

Company Name	Oriental Heavy Industries Co.,Ltd.
Foundation Date	1995.08.01
Capital Assets	3,800 millions (KRW)
Business Field	Superstructure (Deck House, Engine Room Casing, Funnel, Hull Block) Offshore Structure (Accommodation Work Barge, Self Propelling Barge) Surface Preparation & Steel Cutting, Interior, Painting
Land Site	208,795 m ²



OPM

Company Name	Oriental Precision Machinery Co.,Ltd.
Foundation Date	2004.06.01
Capital Assets	1,000 millions(KRW)
Business Field	Deck Machinery (Crane, Winch, Davit, Parts of Machinery)
Land Site	17,823 m ²



OPI

Company Name	Oriental Inspection & Service Co.,Ltd.
Foundation Date	2005.07.19
Capital Assets	200 millions(KRW)
Business Field	Overseas A/S, Sale of Spare Parts, Training & Education

AFFILIATES(OVERSEAS)



OMI

Company Name	Dalian Oriental Marine & Heavy Industry Co.,Ltd.
Foundation Date	2003.08.08
Capital Assets	USD 52,500,000
Business Field	Superstructure (Deck House, Engine Room Casing, Funnel, Hull Block) Offshore Structure (Accommodation Work Barge, Skid Barge, Hopper Barge)
Land Site	262,509 m ²



YOPCO

Company Name	Yantai Oriental Precision & Engineering Co.,Ltd.
Foundation Date	2007.01.09
Capital Assets	USD 5,600,000
Business Field	Deck Machinery (Crane, Winch, Davit, Pipe, Outfitting)
Land Site	28,050 m ²



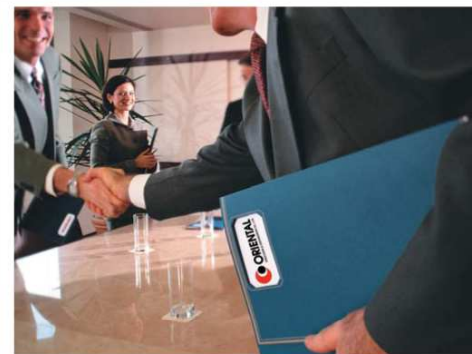
DOTS

Company Name	Oriental Precision (Dalian) Technical Service Co.,Ltd.
Foundation Date	2007.07.23
Capital Assets	USD 200,000
Business Field	Special Design of Shipbuilding & Offshore Structure



VOPCO

Company Name	Oriental Vietnam Precision & Engineering Co.,Ltd.
Foundation Date	2008.09.09
Capital Assets	USD 1,200,000
Business Field	Superstructure (Deck House, Engine Room Casing, Funnel)



OPCO Singapore

Company Name	OPCO Singapore
Foundation Date	2008.06.03
Capital Assets	SGD 100,000
Business Field	Support of Offshore Business in Southeast Asia



OPCO Japan

Company Name	OPCO Japan
Foundation Date	2002.08.02
Capital Assets	JPY 15,000,000
Business Field	Support of Offshore Business in Japan

CONTACT

Oriental realizes customer satisfaction with the best quality
We enhance the quality of Oriental products by specializing each process until
our products are completed.

Offshore Structure

Business

Tel. +82-51-979-0850 Fax. +82-51-832-2064 E-mail,msi@opco.co.kr

Design Part

Tel. +82-55-548-5255 Fax. +82-55-548-5342 E-mail,joung@opco.co.kr

Ship Machinery

A/S

Tel. +82-51-979-0862 Fax. +82-51-979-0827 E-mail,opcoas@opco.co.kr

Spare Part

Tel. +82-51-831-2747 Fax. +82-51-831-6260 E-mail,opcois@opco.co.kr

Business

Tel. +82-51-979-0819 Fax. +82-51-832-2064 E-mail,mel@opco.co.kr

Design Part

Tel. +82-51-979-0860 Fax. +82-51-831-3308 E-mail,md@opco.co.kr

Superstructure

A/S

Tel. +82-52-269-6022 Fax. +82-52-269-6023 E-mail,ksi@opco.co.kr

Business

Tel. +82-51-979-0833 Fax. +82-51-832-2064 E-mail,kjlee@opco.co.kr

